

**THANK YOU NIE SPONSORS!**  
**GOLD SPONSORS**

**Edward Jones**  
MAKING SENSE OF INVESTING  
Jay Sutton, AAMS®  
Financial Advisor  
100 North Main St • Elgin  
512-281-5867  
www.edwardjones.com

**Elgin Smiles**  
DENTAL CARE  
1309 N Ave C • Elgin  
512-281-4260  
www.elginsmilesdental.com

**RUSH CHEVROLET**  
1395 W Hwy 290 • Elgin  
512-281-2210  
www.rushchevrolet.com

**SILVER SPONSORS**  
**ACME BRICK**  
1776 Old McDade Road • Elgin  
512-281-5744  
www.brick.com

**Capstone Construction**  
& Property Services  
512-917-1157  
Renovations • Additions  
Residential Make Ready  
Elgin VFW Post #6115  
118 Old Sayers Road • Elgin  
512-285-2300  
Like Us On facebook

**TWFG CALLAHAN INSURANCE**  
"Our Policy is Caring"  
101 West 1st Suite B & C • Elgin  
512-281-3769  
512-285-7760  
matthewcallahan.myhomehq.biz

**CLASSROOM SPONSORS**  
**Debra Cole John Horton Realty**  
**Amaya's Custom Tailor Shop**  
**IRA - Beauty & Barber Shop**  
**Eats-N-Treats Bakery**

**Kid Scoop VOCABULARY BUILDERS**  
This week's word: **HOLLOW**  
The adjective **hollow** means having a space inside.  
The bird made its nest in the **hollow** of a tree.

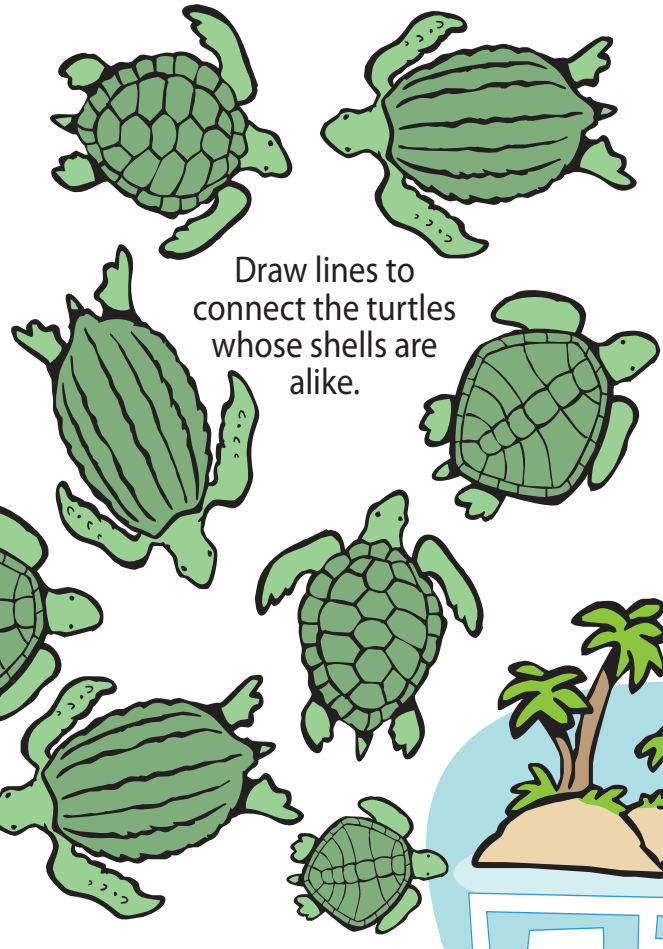
Try to use the word **hollow** in a sentence today when talking with your friends and family.

**Write On!**  
**Exaggerate!**  
I can race as fast as a rocket to Mars!  
Make up your own exaggerations.

# Sea Turtles

Sea or marine turtles have outlived almost all of the prehistoric animals. Marine turtles were around during the time of the dinosaurs and are still present in the world's oceans today. On today's *Kid Scoop* page, meet these incredible creatures!

**Turtle Threats**  
In recent times, marine turtles have faced dangers. Entire turtle populations have been almost completely wiped out due to threats like hunters, habitat destruction, pollution, being hit by boats, and introduced predators.



Draw lines to connect the turtles whose shells are alike.

## Kinds of Sea Turtles

According to the U.S. Fish and Wildlife Service there are seven kinds of sea turtles: **hawksbill, green, loggerhead, flatback, Kemp's ridley, olive ridley and leatherback.**

One way to tell one type of sea turtle from another is to look at the pattern of scutes, or plates, on their shells.

NOTE: Unlike other species of sea turtle, the leatherback does not have scales. Instead, it is covered with firm, rubbery skin with several long ridges or "keels."

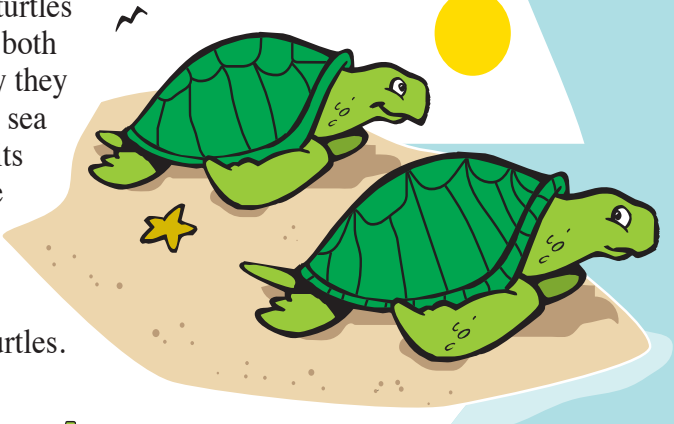
Standards Link: Life Science: There is variation among individuals of one kind within a population.

## Turtle Tidbit

Migrating leatherback turtles have been known to dive down 4,600 feet (1,400 meters) to avoid sharks and other predators. They must surface every hour to breathe.

## What's the difference?

Sea turtles and land turtles are reptiles and they both have shells. One way they are different is that a sea turtle cannot retract its limbs or its head like a land turtle can.



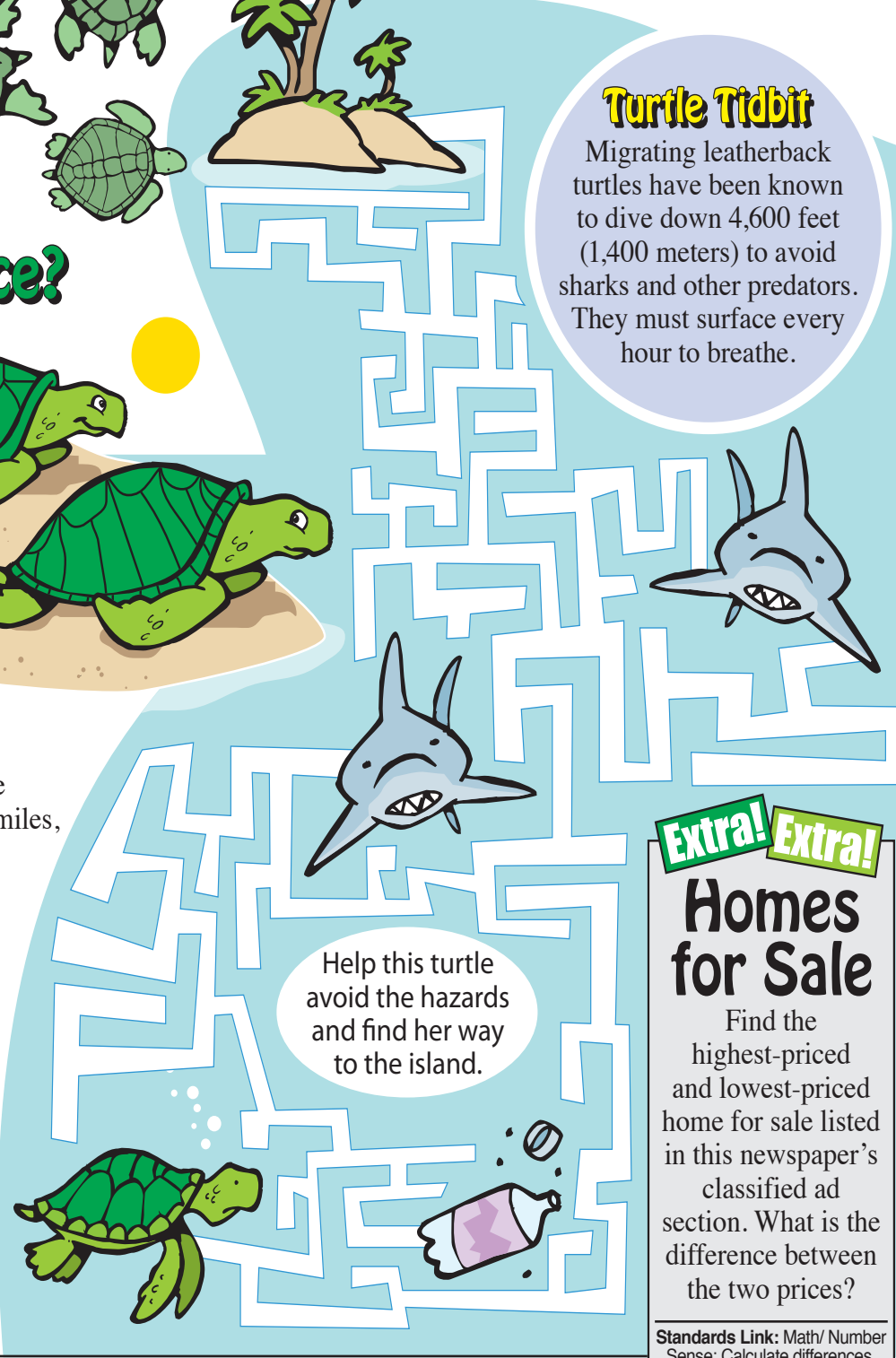
Find the differences between these two turtles.

## Turtle Travels

Sea turtles are long-distance travelers. Some species travel hundreds, even thousands of miles, from their feeding grounds to their nesting grounds. The adult females return faithfully to lay their eggs on the same beach where they hatched.

The breeding grounds for the Pacific population of loggerhead turtles are limited to a few beaches in southern Japan, but adults are known to migrate incredible distances in order to feed. One turtle tagged in Japan was found feeding off the coast of Baja, Mexico, a distance of over 7,500 miles (12,000 kilometers). Loggerheads have been sighted from Chile all the way north to Alaska.

Standards Link: Life Science: The sequential stages of life cycles are different for different animals.



Help this turtle avoid the hazards and find her way to the island.

## Extra! Extra! Homes for Sale

Find the highest-priced and lowest-priced home for sale listed in this newspaper's classified ad section. What is the difference between the two prices?

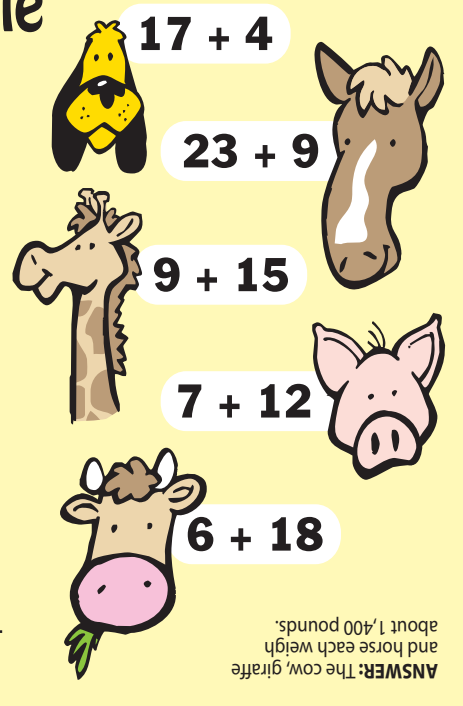
Standards Link: Math/ Number Sense: Calculate differences.

## Kid Scoop Puzzler

### Titanic Turtle

The leatherback is the largest sea turtle. It can grow to be about 6 feet (1.8 meters) long and weigh as much as 1,400 pounds (637 kilograms).

How much is 1,400 pounds? Add up the numbers on each of the animals. The animals with **even** sums weigh about 1,400 pounds. The others weigh less.



Standards Link: Math/Number Sense: Calculate sums.

ANSWER: The cow, giraffe and horse each weigh about 1,400 pounds.

## Double Double Word Search

- TURTLES
- RIDLEY
- BREEDING
- JAPAN
- OCEAN
- OLIVE
- BEACHES
- BOATS
- SCUTES
- KEELS
- SPECIES
- FIRM
- MILES
- MARINE

Find the words in the puzzle. How many of them can you find on this page?

S	S	E	I	C	E	P	S	T	O
E	S	E	L	I	M	Y	L	C	U
H	S	R	T	R	E	J	E	L	T
C	E	V	I	L	O	A	E	E	S
A	L	F	D	S	N	P	K	D	E
E	T	I	C	S	T	A	O	B	T
B	R	E	E	D	I	N	G	M	U
F	U	R	M	A	R	I	N	E	C
L	T	K	J	S	E	L	A	C	S

Standards Link: Letter sequencing. Recognized identical words. Skim and scan reading. Recall spelling patterns.

## FROM THE Kid Scoop LESSON LIBRARY

### Ocean Scrapbook

Look for newspaper pictures and stories about the ocean. Cut out the stories and pictures, include some illustrations of your own and create an "Ocean" scrapbook.

Standards Link: Earth Science: Students know characteristics of oceans.

## What do turtles take to stay healthy?

ANSWER: Vitamin sea.

**BECOME AN NIE SPONSOR TODAY**  
And promote literacy and journalism in our community's young children!  
**CALL Heather Ott for more information 512-285-3333**